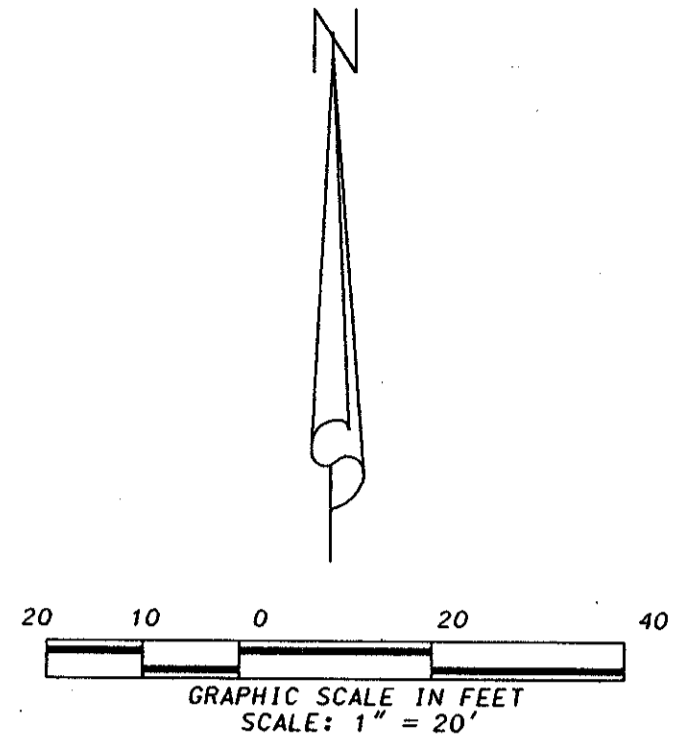


LEWIS DUPLEX PLAT

P.U.D.

BEING A REPLAT OF LOTS 10A AND 10B, AND A PORTION OF THE OPEN SPACE, OF REPLAT OF A PORTION OF BREAKERS WEST PLAT NO. 6 REPLAT, RECORDED IN PLAT BOOK 68, PAGES 163 AND 164, PALM BEACH COUNTY PUBLIC RECORDS, IN SECTIONS 30 AND 31, TOWNSHIP 43 SOUTH, RANGE 42 EAST, PALM BEACH COUNTY, FLORIDA.
 MARCH 1997
 SHEET 2 OF 2



*PET. 73-219
5/2/21G*

*PET. 73-219
BREAKERS WEST
PLAT 6*

80/163

FOUND P.B.C. CONCRETE MONUMENT "OKEE S.R.-7"
 90N:864230.7450
 90E:917056.5980

N01°48'37"E (GRID) 2655.95' (GRID)
 N02°43'56"E 2655.31' (MEASURED)

FOUND P.B.C. CONCRETE MONUMENT "QUANTUM"
 90N:861576.1180
 90E:916972.7000

N01°31'53"E 3235.47'

SET IRON ROD & CAP
 "TRAVERSE LB*4431"

N67°52'42"W 1059.89'

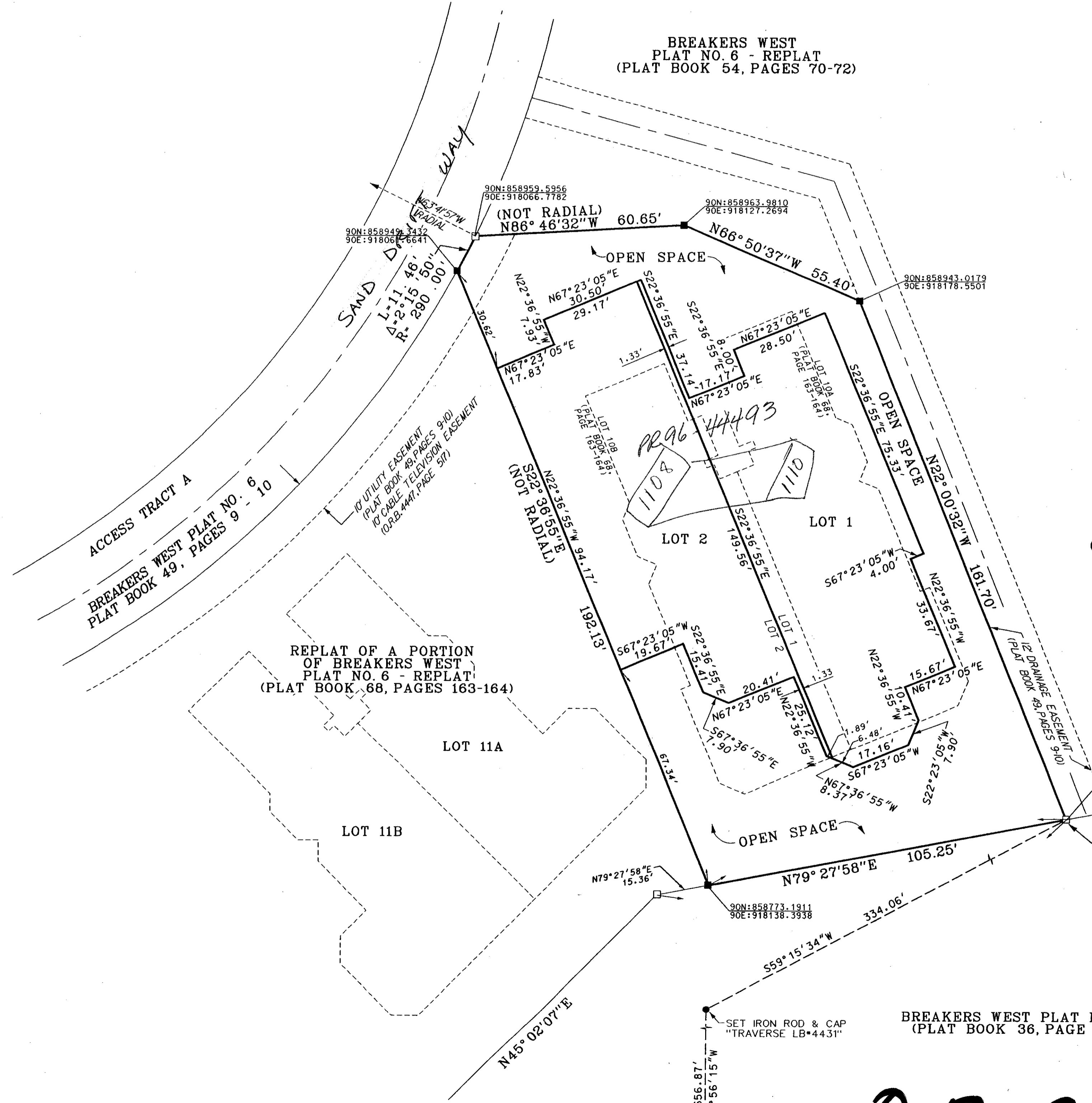
1059.89'

SET IRON ROD & CAP
 "TRAVERSE LB*4431"

SET PK & DISK
 "TRAVERSE LB*4431"

BREAKERS WEST PLAT NO. 2
 (PLAT BOOK 36, PAGE 31)

POINT OF BEGINNING
 SOUTHEAST CORNER OF REPLAT OF
 A PORTION OF BREAKERS WEST PLAT
 NO. 6 - REPLAT (PLAT BOOK 68, PAGE 163-164)



SUBDIVISION * LEWIS Duplex Plat
 BOOK 80
 FLOOD ZONE 8
 QUAD 46
 ZONING RS
 ZIP CODE 33411
 PUD NAME LEWIS Duplex Plat

LIDBERG LAND SURVEYING INC.
 LB4431
 675 West Indiantown Road, Suite 200,
 Jupiter, Florida 33458 TEL. 561-746-8454

FLD.	---	JOB	96-598	FB.	---	PG.	---
OFF.	E.A.D.	DATE	11/20/96	DWG.	D96-598		
CKD.	D.C.L.	REF.	96-598(ms)	SHEET	2 OF 2		

0217-023